

UPCERA®

Shenzhen Upcera Dental Technology Co., Ltd

5th Floor, Tsinghua IT Port R&B Bldg. B, Shenzhen,
Guangdong, China

+86 755-8882-0818
sales@upcera.com
dental.upcera.com



Intraoral Scanner

\$6000



CE

ISO13485

FDA

Health Canada

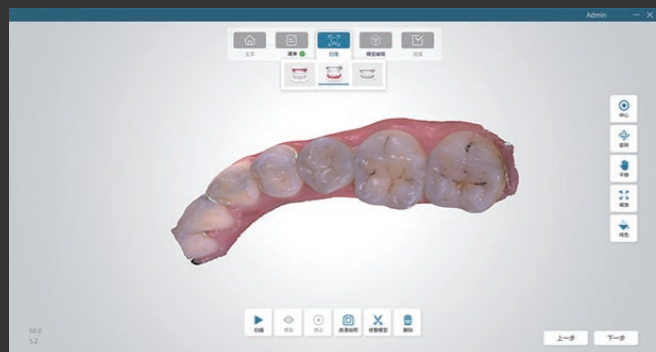
KFDA

GOST

UPCERA®

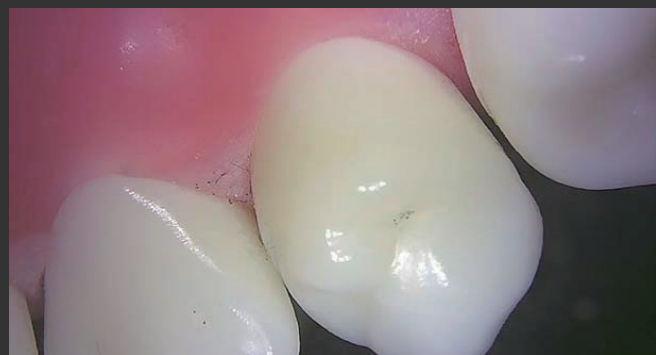
Powder free

Simplify scanning procedure and reduce complexity
Improve patients comfort



Chromoscan

Colored scanning that can show the true dental situation in vivo in real-time



Intraoral Camera

Take intraoral photo during scanning which can assist operator to communicate with patients



• Ergonomic Size & Weight

Scanner dimension:
240mm(L) x39.8mm(W)x 57mm(H)
Weight: 350g

Scanner tip dimension:
18.5mm(H)x19mm(W)
Fits children as well as elderly

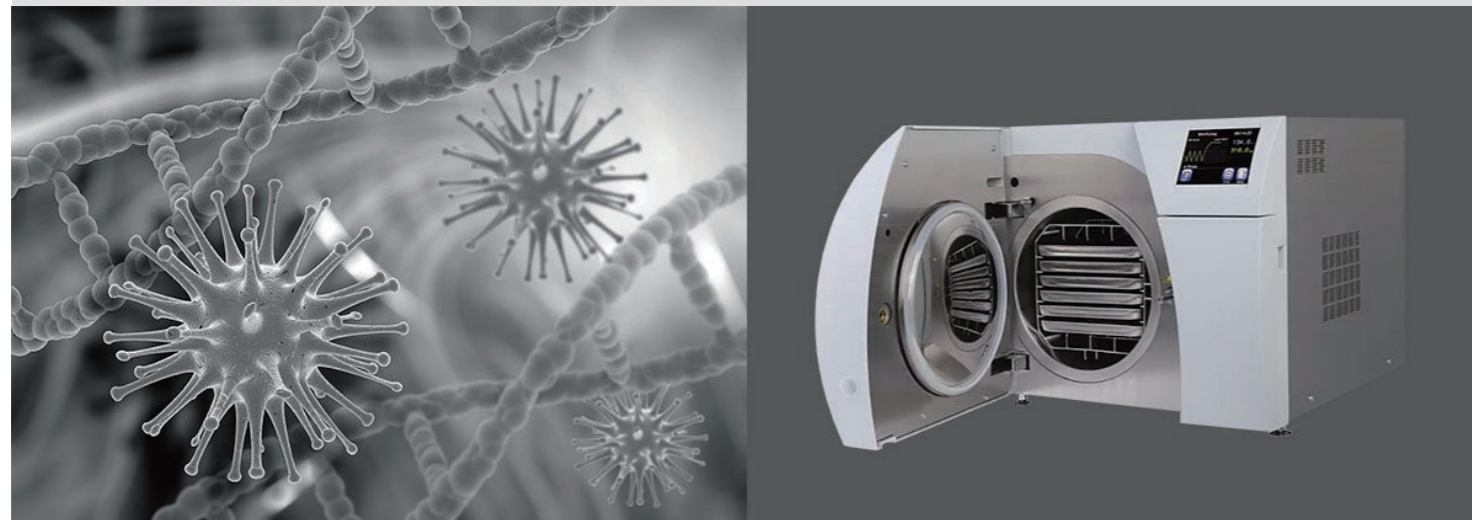
High Precision and fast Scanning

High accuracy that can cover all different indications
Whole scanning process takes ≤ 3 minutes approximately
which is much faster than taking traditional impression



Continuous scanning

Shorten the clinical operation time and improve the efficiency
Real time display of scanning data, doctors can analyze
the data simultaneously



Multiple disinfection methods for scanner tips

Detachable scanner tips can be auto-clavable with 121°C and 134°C,
and immersion disinfection
Avoid cross infection, Safe and Reliable



Occlusion relationship analysis

Assist operator to check the occlusion relationship
and interocclusal space by view the color scale

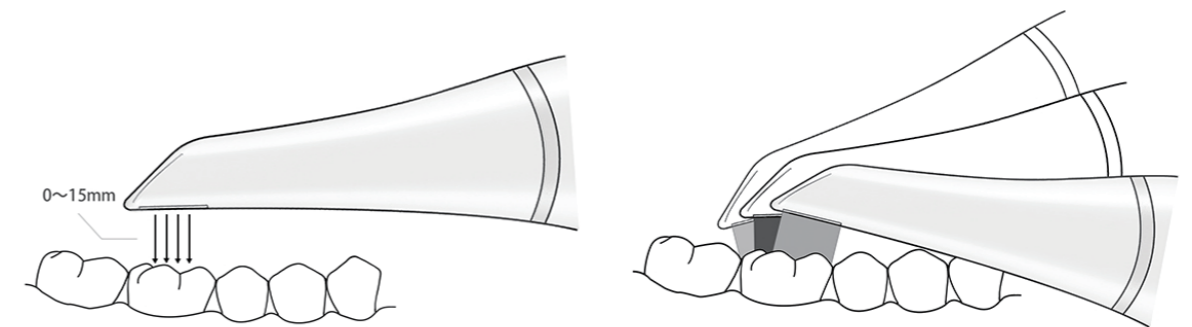


Intelligent optimization

Automatically remove any redundant data
such as gloves, tongue etc

Moderate depth of field

15mm depth of field to provide scanning
efficiency and ensure data integrity



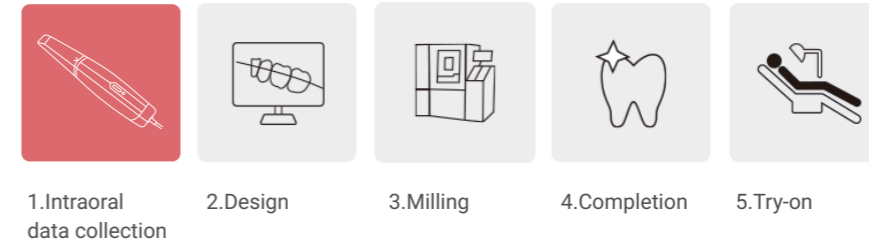
Built-in anti-fog module

Scanner tips with automatically mirror
heating to ensure data accuracy

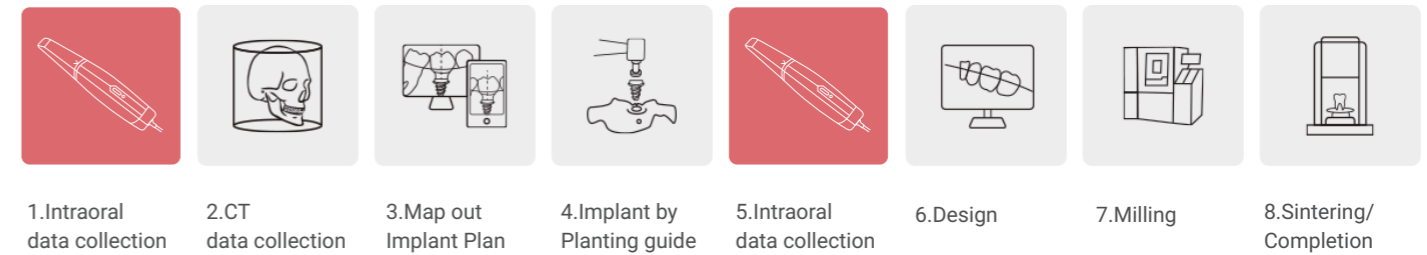




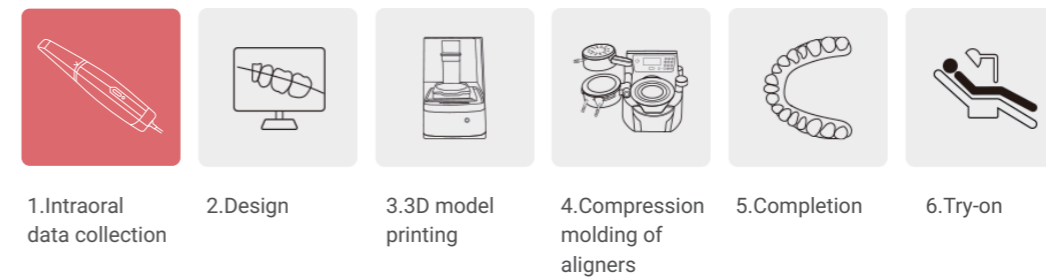
Portable digitalized restoration treatment workflow



Portable digitalized implant treatment workflow

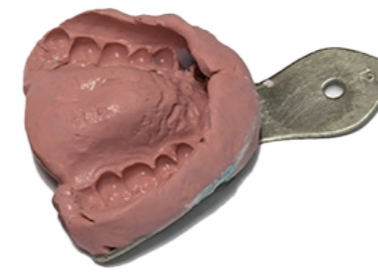


Portable digitalized orthodontics treatment workflow



Dental clinic to dental lab digital solution workflow



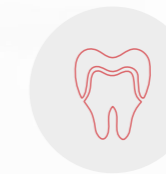
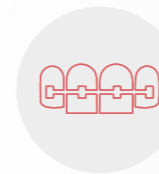


Traditional Impression

- Takes 10 Mins
- Strong gag reflex
- Poor comfort
- Complex procedure
- Colorless plater model

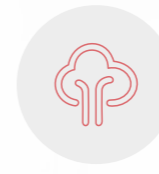
Digital impression

- Takes 5 Mins
- No gag reflex
- Excellent comfort
- Simple procedure
- Real color model



Apply to various clinical treatment

Restoration, Implant, and Orthodontics appliance



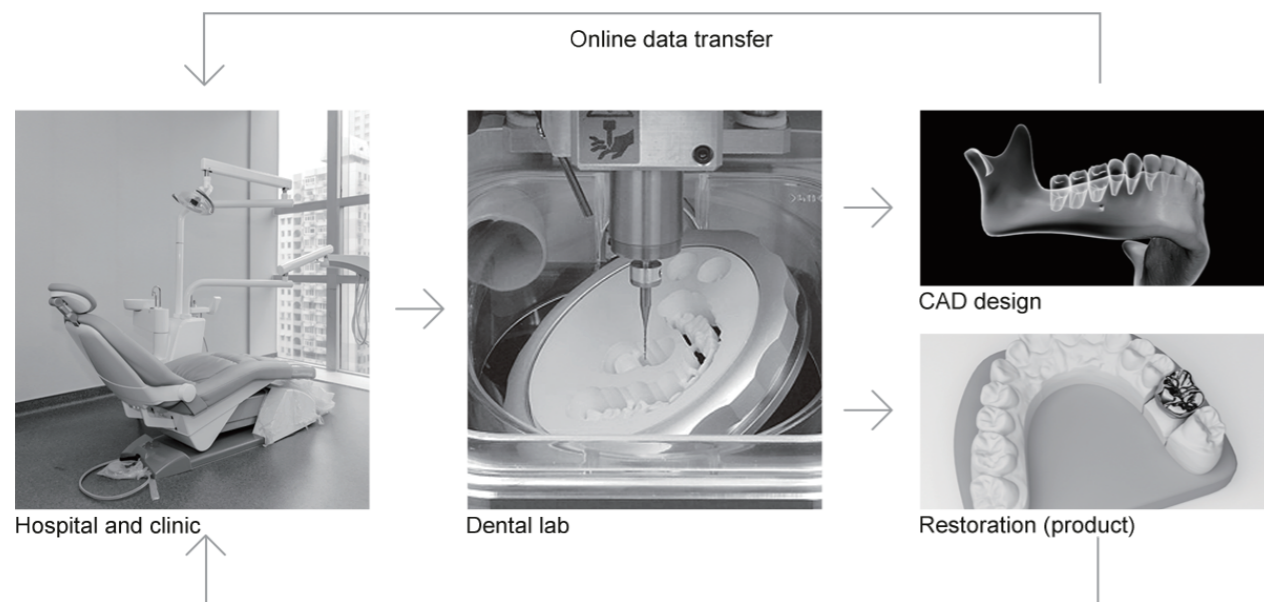
Data in the Cloud

Multifunction online platform which will provide data cloud storage, data sharing, EOS, online treatment plan design, customer database and so on



Data format

STL,PLY,OBJ can be exported, which is compatible with any CAD software



SPECIFICATION S6000 · Intraoral Scanner

Product type	Portable intraoral scanner
Anti-fog technology	Built-in module
Sensor	High speed CMOS
Disinfection methods	121 & 134 autoclavable
Splicing technology	Imaging Technique Accur-3D
Output format	STL PLY OBJ
Scan type	Power free colored scan
Image	Colored
Scan mode	3D video scanning
Scan Speed	5 minutes
Scan depth of field	15mm
Length of connecting cable	2m
Scanner tip	18.5mm(H) x 19mm(W)
Weight	350g
Connection	USB 3.0
Scanner	240mm(L) x 39.8mm(W) x 57mm(H)

